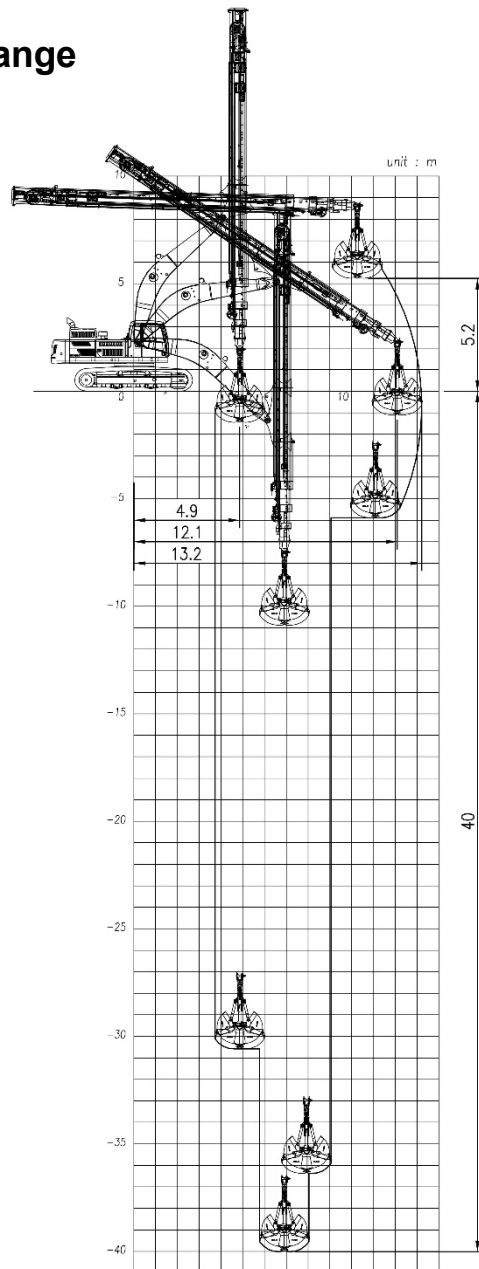
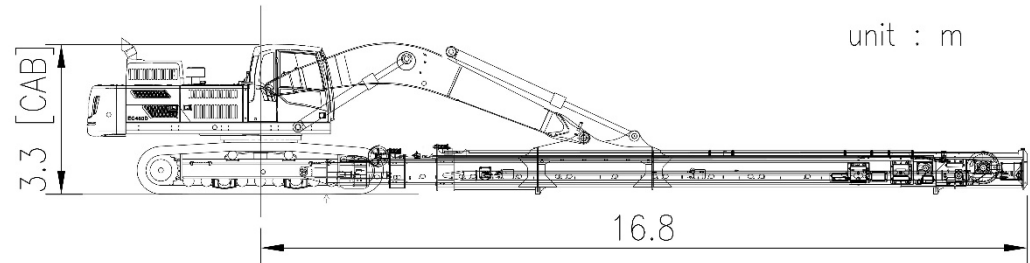


EC480DL with VTD48-131 (40m), Extended Track

Working range



Shipping Dimension



Weight (without attachment , cab modification)

Base machine (shoe 600mm)		kg	28,780
CWT	Standard	kg	9,750
	Additional	kg	4,600
Front (working equipment)		kg	15,620
Total		kg	58,750

Component

STD. Boom	Boom length	m	7.0
TD kit	Telescopic Dipper	-	VTD48-131
		kg	11,000
	Clamshell Bucket	cu.m	1.4
kg		1,900	
Cylinder	Boom	-	EC480D
	Arm	-	EC480D

Sliding cab is available. Refer to "Cabin Modification" for details.