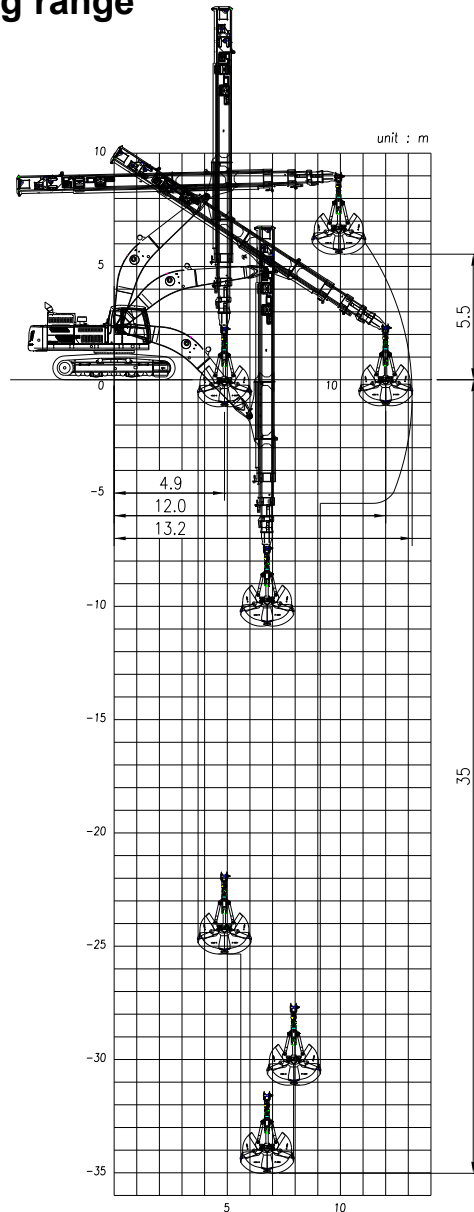
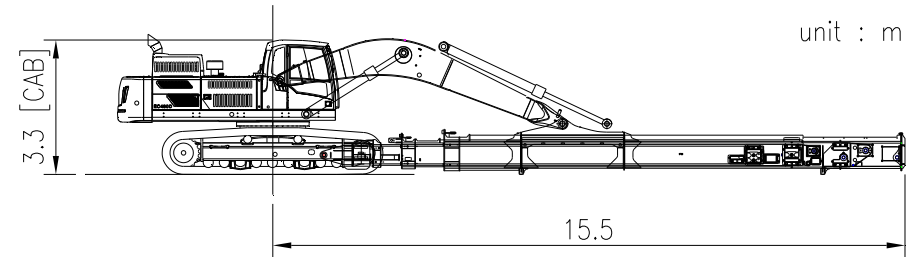


EC480DL with VTD48-115 (35m), Extended Track

Working range



Shipping Dimension



Weight (without attachment , cab modification)

Base machine (shoe 600mm)		kg	28,780
CWT	Standard	kg	9,750
	Additional	kg	4,600
Front (working equipment)		kg	14,420
Total		kg	57,550

Component

STD. Boom	Boom length	m	7.0
TD kit	Telescopic Dipper	-	VTD48-115
		kg	9,800
Cylinder	Clamshell Bucket	cu.m	1.5
		kg	2,060
Cylinder	Boom	-	EC480D
	Arm	-	EC480D

Sliding cab is available. Refer to "Cabin Modification" for details.