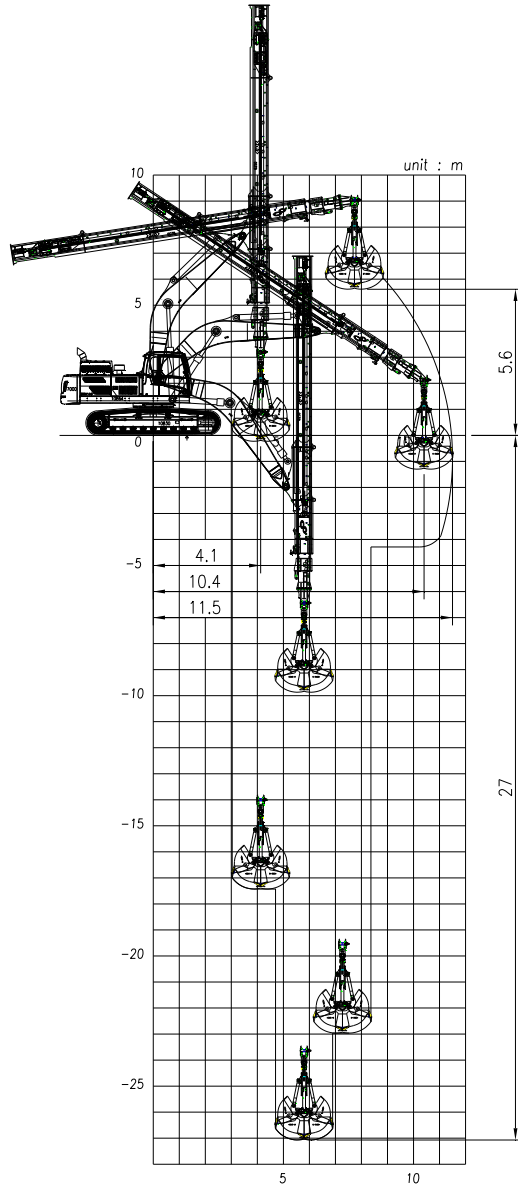
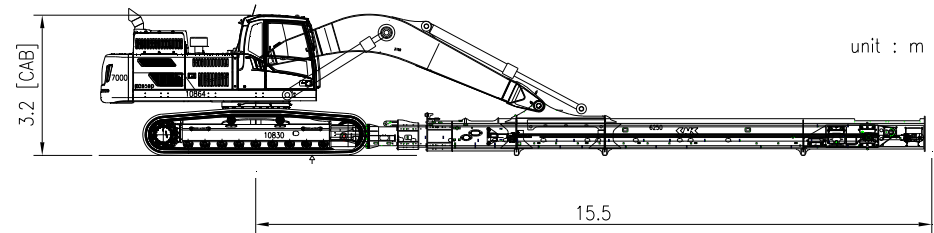


EC350DL with VTD35D-89 (27m)

Working range



Shipping Dimension



Weight (without attachment , cab modification)

Base machine (shoe 600mm)		kg	21,694
CWT	Standard	kg	7,250
	Additional	kg	3,000
Front (working equipment)		kg	10,000
Total		kg	41.944

Component

STD. Boom	Boom length	m	6.45
TD kit	Telescopic Dipper	-	VTD35-89
		kg	6,250
	Clamshell Bucket	cu.m	1.3
kg		2,000	
Cylinder	Boom	-	EC350D
	Arm	-	EC350D

Sliding cab is available. Refer to "Cabin Modification" for details.