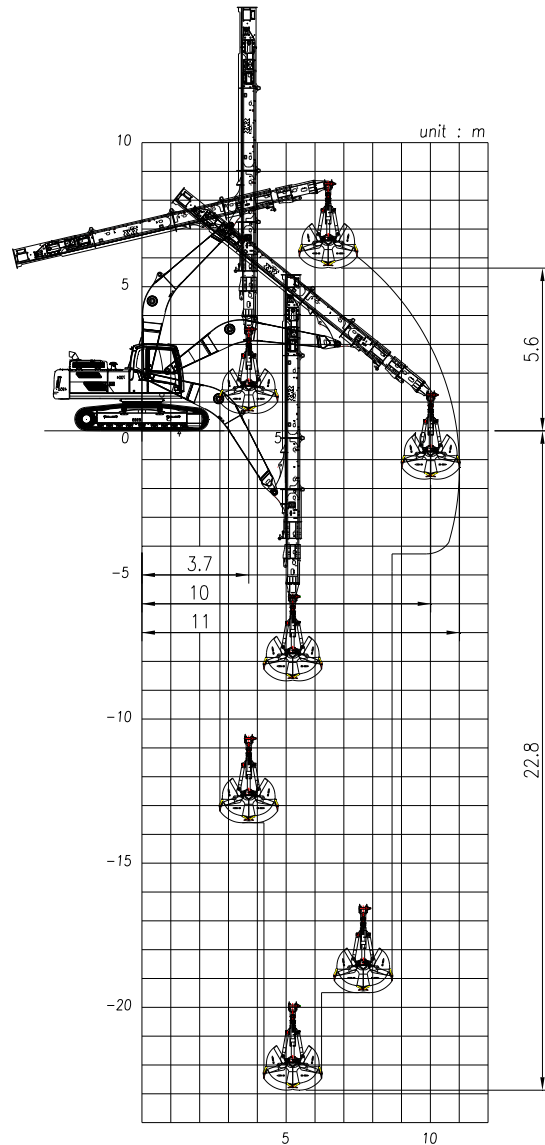
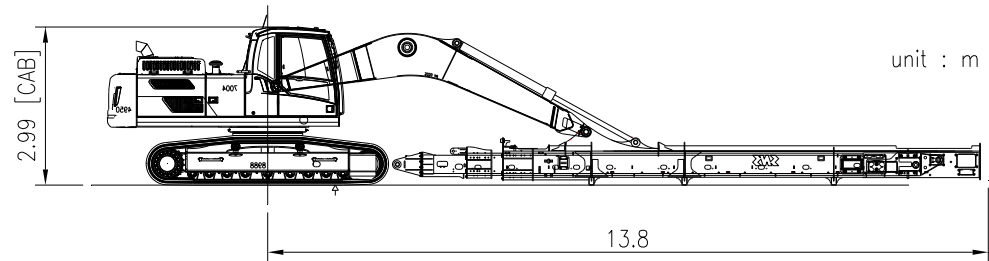


EC250DL with VTD25D-76 (22.8m)

Working range



Shipping Dimension



Weight (without attachment , cab modification)

Base machine (shoe 600mm)		kg	16,347
CWT	Standard	kg	4,950
	Additional	kg	2,000
Front (working equipment)		kg	6,850
Total		kg	30,147

Component

STD. Boom	Boom length	m	6.0
TD kit	Telescopic Dipper	-	VTD25-76
		kg	4,550
	Clamshell Bucket	cu.m	0.8
kg		1,370	
Cylinder	Boom	-	EC250D
	Arm	-	EC250D

Sliding cab is available. Refer to "Cabin Modification" for details.