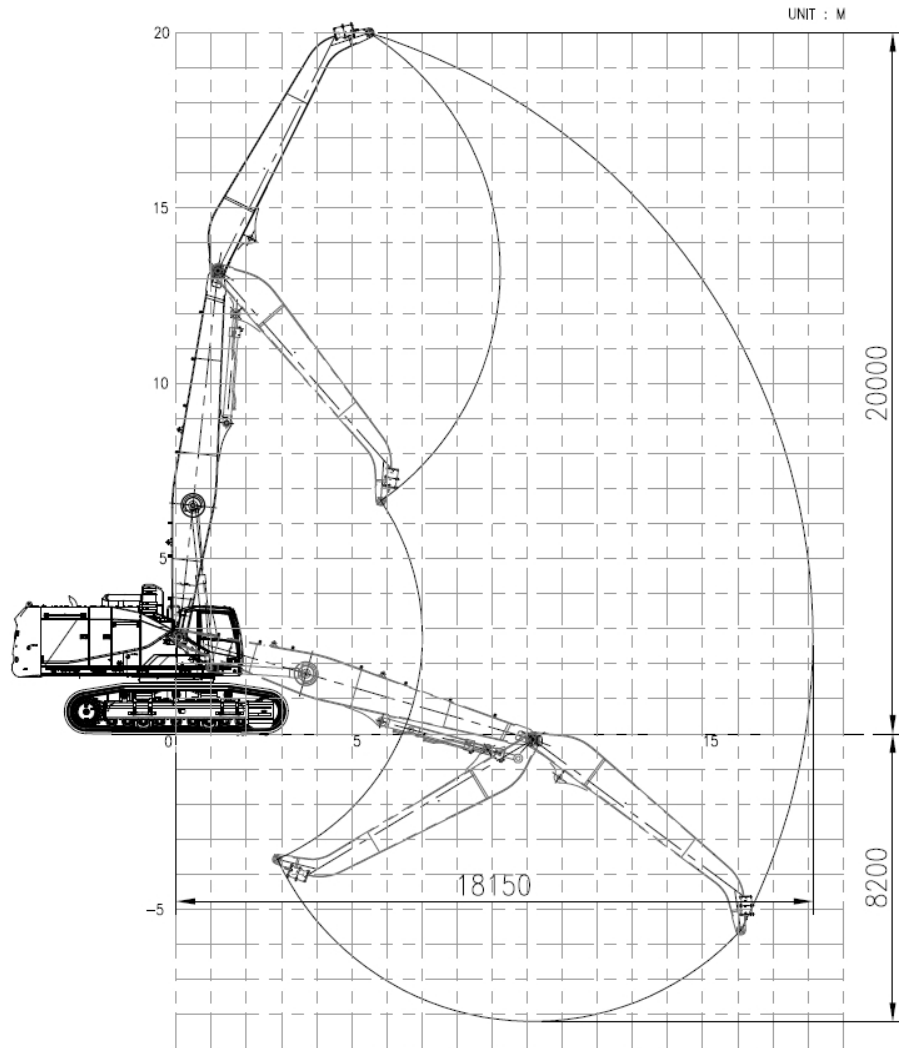
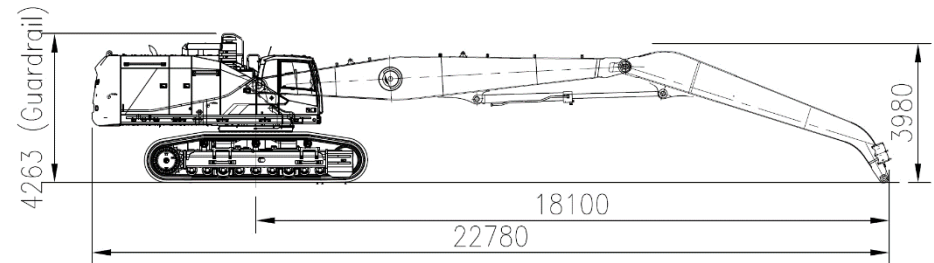


EC950EL with VMH95-60-2P (18.2m)

Working range



Dimension



Weight (without attachment , cab modification)

Base machine (shoe 650mm)		kg	54,720
CWT	Factory CW	Kg	16,100
	Additional	kg	4,000
Front (working equipment)		kg	12,220
Total		kg	87,040

Component

MH kit	Boom length	m	10.5
	-	M	
	Arm length	m	8.0
Cylinder	Boom	-	EC950E
	-	-	-
	Arm	-	EC950E
Recommended Attachment		m ³ /kg	

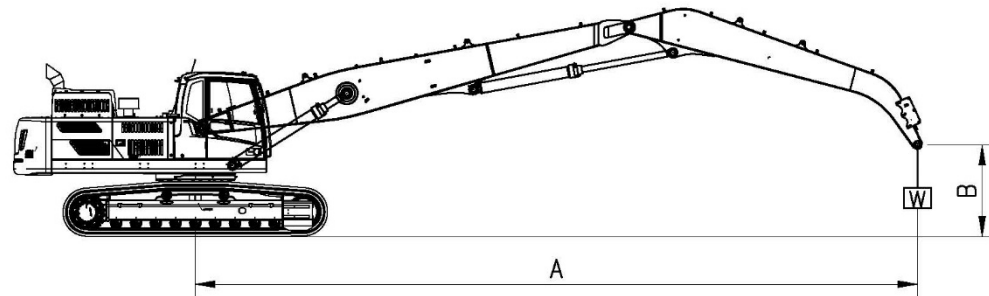
Elevating cab is available. Refer to "Cabin Modification" for details.

EC950EL with VMH95-60-2P (18.2m)

Lifting capacity

At arm end without bucket.

Implement pressure : 350 kgf/cm²



A \ B	4.5m		6.0m		7.5m		9.0m		10.5m		12.0m		13.5m		15.0m		16.5m		18.0m		Max. REACH						
	Along UC	Across UC	Along UC	Across UC	Along UC	Across UC	Along UC	Across UC	Along UC	Across UC	Along UC	Across UC	Along UC	Across UC	Along UC	Across UC	Along UC	Across UC	Along UC	Across UC	Along UC	Across UC	mm				
19.5m																							*22480	*22480	@6.90		
18.0m							*19220	*19220																*18150	*18150	@9.80	
16.5m							*18020	*18020	*16790	*16790														*16030	*16030	@11.82	
15.0m									*16180	*16180	*15220	*15220												*14550	14090	@13.38	
13.5m									*15920	*15920	*14920	*14920	*14080	*14080										*13550	12240	@14.62	
12.0m									*15940	*15940	*14870	*14870	*13950	*13950	*13130	11850								*12810	10980	@15.61	
10.5m							*17600	*17600	*16190	*16190	*15010	*15010	*13980	*13980	*13070	11880								*12220	10080	@16.41	
9.0m							*18300	*18300	*16660	*16660	*15300	*15300	*14130	14030	*13110	11810	*12120	10010						*11720	9420	@17.04	
7.5m					*21680	*21680	*19280	*19280	*17290	*17290	*15700	*15700	*14370	13800	*13210	11660	*12120	9950						*11290	8950	@17.52	
6.0m					*23660	*23660	*20420	*20420	*18010	*18010	*16150	*16150	*14630	13510	*13330	11470	*12130	9840						*10880	8610	@17.86	
4.5m					*25560	*25560	*21600	*21600	*18760	*18760	*16600	15700	*14880	13200	*13430	11250	*12090	9710	*10580	8430				*10490	8380	@18.06	
3.0m					*27210	*27210	*22600	*22600	*19360	18380	*16960	15230	*15050	12870	*13450	11030	*11980	9560	*10310	8370				*10080	8260	@18.15	
1.5m					*28200	28100	*23240	21910	*19740	17750	*17140	14790	*15090	12560	*13350	10820	*11730	9420	*9830	8300				*9650	8240	@18.10	
0.0m					*28300	27050	*23340	21160	*19770	17230	*17070	14410	*14910	12290	*13050	10630	*11280	9310						*9160	8310	@17.93	
-1.5m			*10250	*10250	*24340	*24340	*22820	20610	*19360	16830	*16660	14120	*14450	12070	*12500	10490	*10540	9230						*8590	8480	@17.64	
-3.0m	*6730	*6730	*12220	*12220	*23740	*23740	*21670	20280	*18450	16560	*15840	13910	*13620	11930	*11580	10410	*9350	9210						*7890	*7890	@17.20	
-4.5m	*9520	*9520	*14780	*14780	*23290	*23290	*19830	*19830	*16970	16430	*14530	13810	*12340	11880	*10170	*10170	*7360	*7360						*7030	*7030	@16.62	
-6.0m			*17710	*17710	*19990	*19990	*17280	*17280	*14850	*14850	*12620	*12620	*10440	*10440	*7990	*7990											
-7.5m					*15840	*15840	*13940	*13940	*11970	*11970	*9940	*9940															

unit : kg

- Notes :
1. Machine in "implement Pressure for lifting capacities.
 2. The above loads are in compliance with SAE J1097 and ISO 10567 Hydraulic Excavator lifting capacity Standards.
 3. Rated loads do not exceed 87% of hydraulic capacity or 75% of tipping load.
 4. Rated loads marked with an asterisk(*) are limited by hydraulic capacity rather than tipping load.