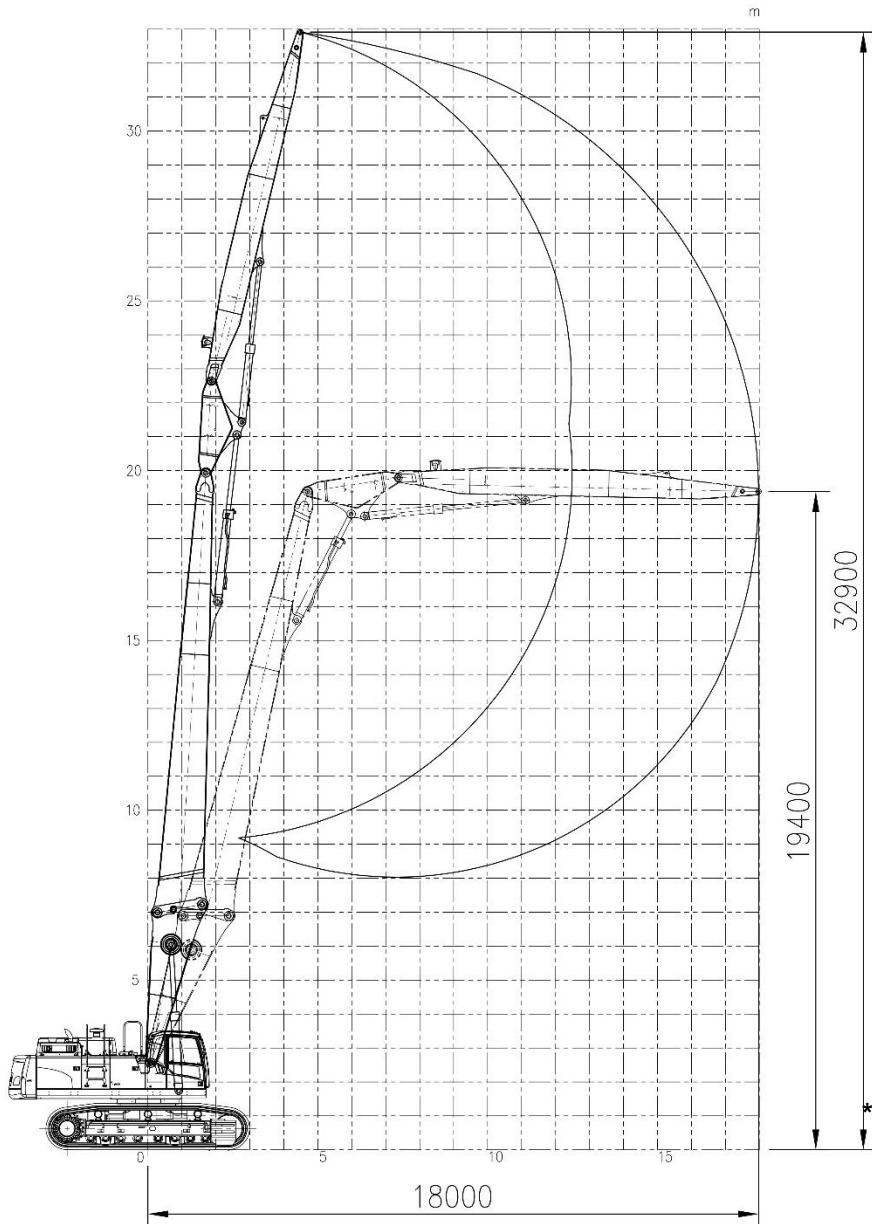
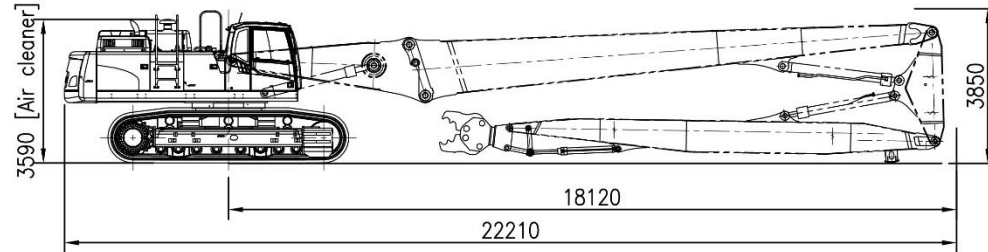


EC750DL with VDM75-108-3P (33m)

Working range



Shipping Dimension



Weight (without attachment , cab modification)

Base machine (shoe 650mm)		kg	44797
CWT	Factory CW	kg	12700
	Additional	kg	4000
Front (working equipment)		kg	16300
Total		kg	77797

Component

DM kit	Boom length	m	17.4
	Mid. Arm length	m	2.7
	End Arm length	m	10.6
Cylinder	Boom	-	EC750D
	Mid. Arm	-	EC750D
	End Arm	-	EC480D
	Bucket	-	EC300D
Allowable tool weight		ton	3.0

Tilting cab is available. Refer to "Cabin Modification" for details.

* Specifications are subject to change for improvement of performance.