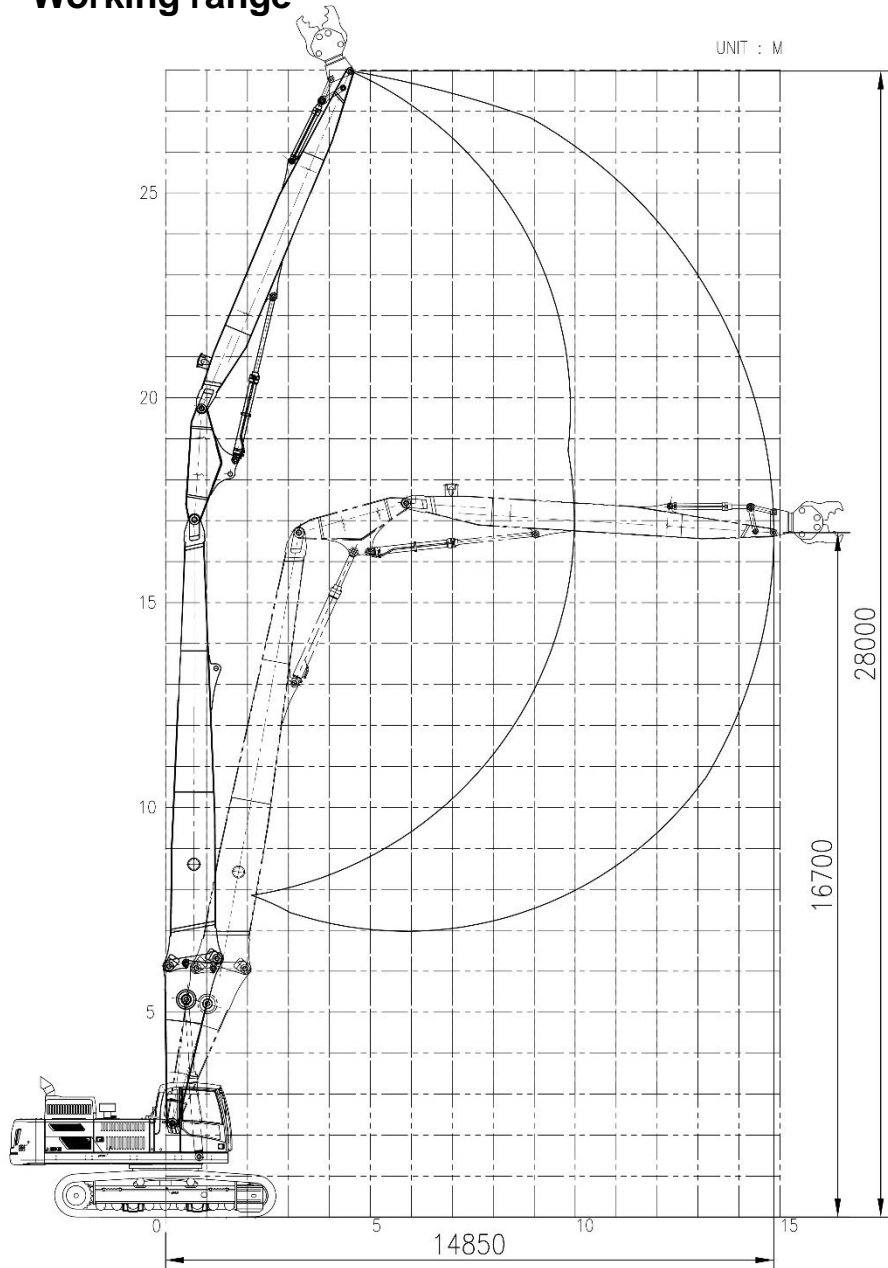
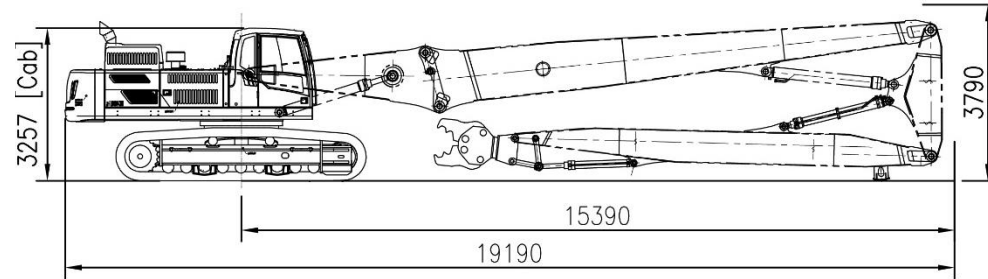


EC480DL with VDM48-92-3P (28m)

Working range



Shipping Dimension



Weight (without attachment , cab modification)

Base machine		kg	27700
(Fixed UC shoe 600mm)			
CWT	Factory CW	kg	9,750
	Additional	kg	4,500
Front (working equipment)		kg	12900
Total		kg	54850

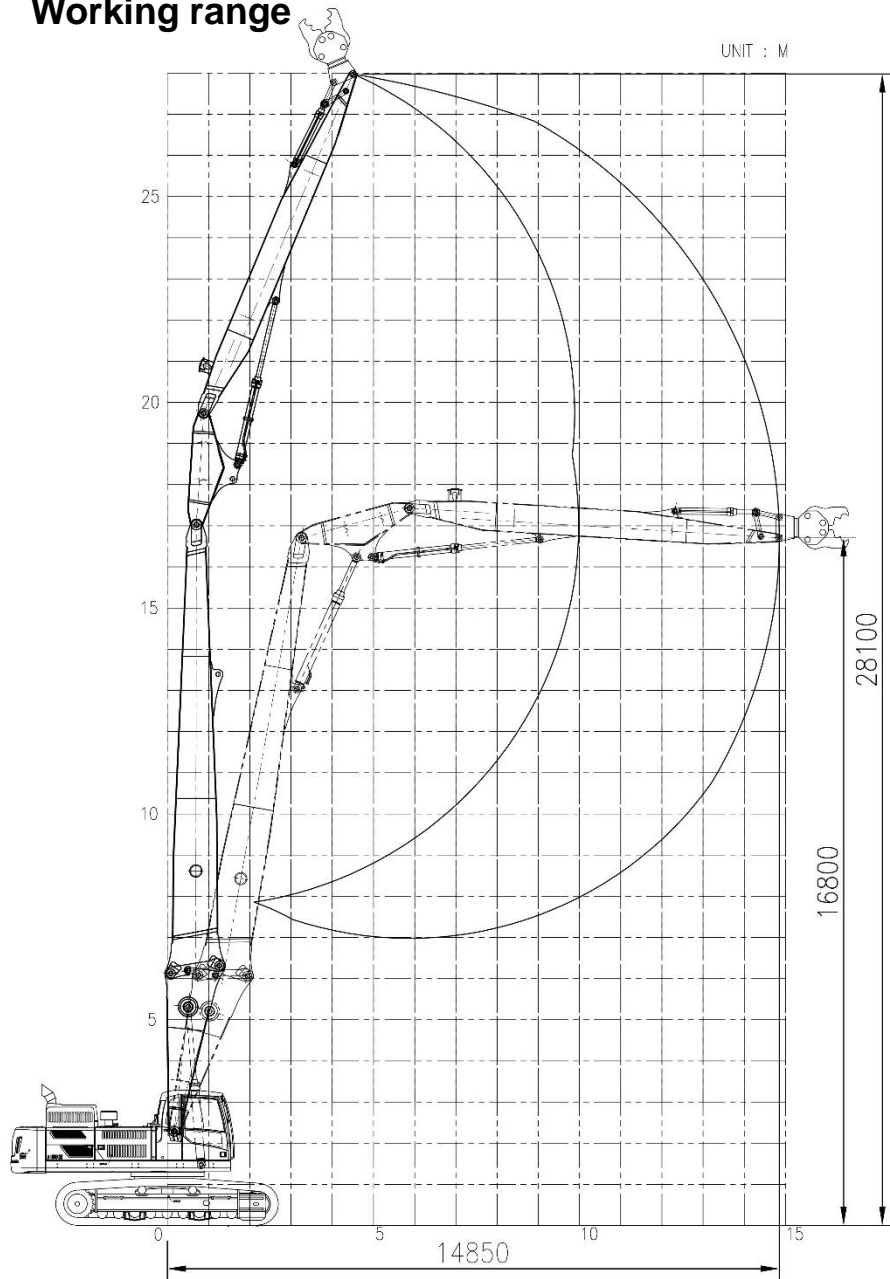
Component

DM kit	Boom length	m	14.7
	Mid, Arm length	m	2.7
	End Arm length	m	9.0
Cylinder	Boom	-	EC480D
	Mid. Arm	-	EC480D
	End Arm	-	EC300D
	Bucket	-	EC250D
Allowable tool weight		ton	2.6

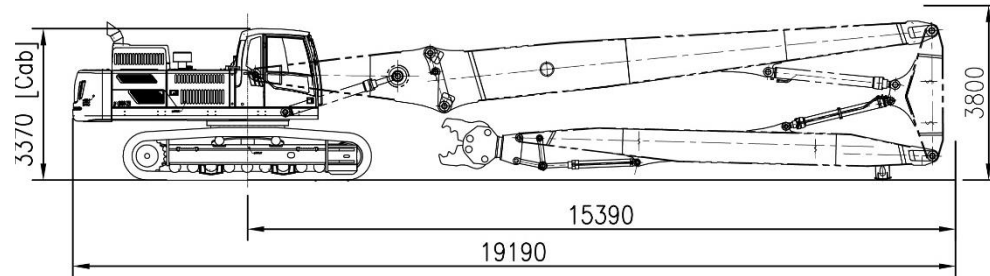
Tilting cab is available. Refer to "Cabin Modification" for details.

EC480DL with VDM48-92-3P (28m)

Working range



Shipping Dimension



Weight (without attachment , cab modification)

Base machine		kg	28780
(Retractable UC shoe 600mm)			
CWT	Factory CW	kg	9,750
	Additional	kg	4,500
Front (working equipment)		kg	12900
Total		kg	55930

Component

DM kit	Boom length	m	14.7
	Mid, Arm length	m	2.7
	End Arm length	m	9.0
Cylinder	Boom	-	EC480D
	Mid. Arm	-	EC480D
	End Arm	-	EC300D
	Bucket	-	EC250D
Allowable tool weight		ton	2.6

Tilting cab is available. Refer to "Cabin Modification" for details.