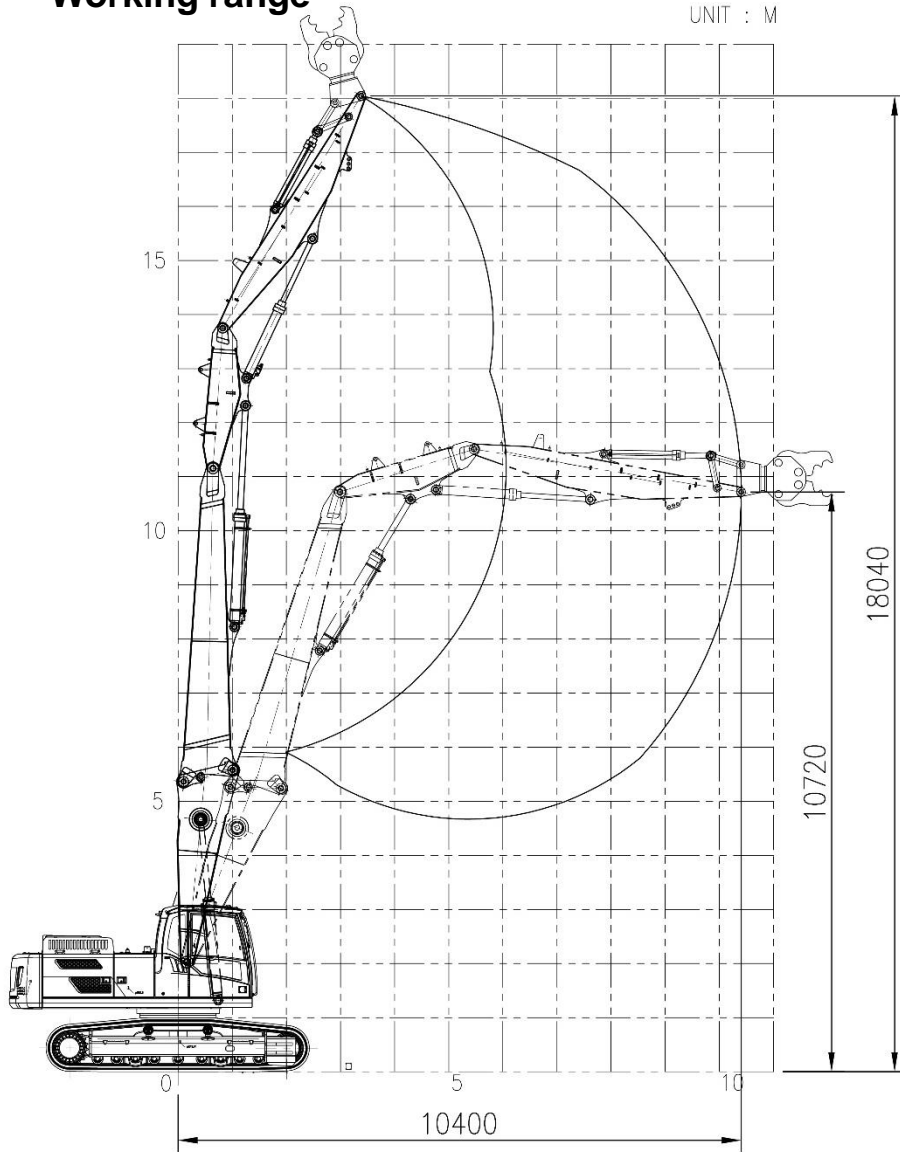
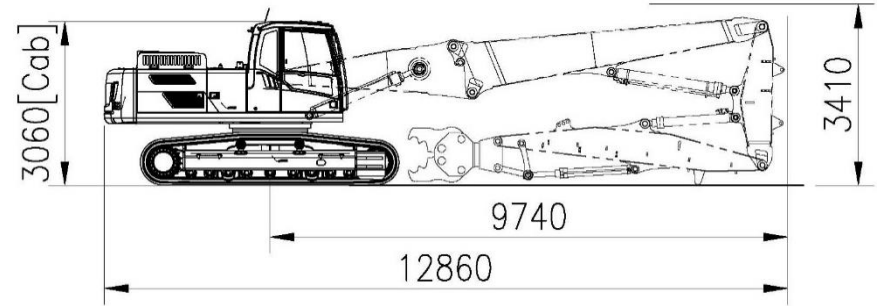


EC300DL with VDM30-59-3P (18m)

Working range



Shipping Dimension



Weight (without attachment , cab modification)

Base machine (shoe 600mm)		kg	18568
CWT	Factory CW	kg	5500
	Additional	kg	3800
Front (working equipment)		kg	6700
Total		kg	34568

Component

DM kit	Boom length	m	9.1
	Mid, Arm length	m	2.6
	End Arm length	m	5.0
Cylinder	Boom	-	EC300D
	Mid. Arm	-	EC300D
	End Arm	-	EC220D
	Bucket	-	EC220D
Allowable tool weight		ton	2.2

Tilting cab is available. Refer to "Cabin Modification" for details.