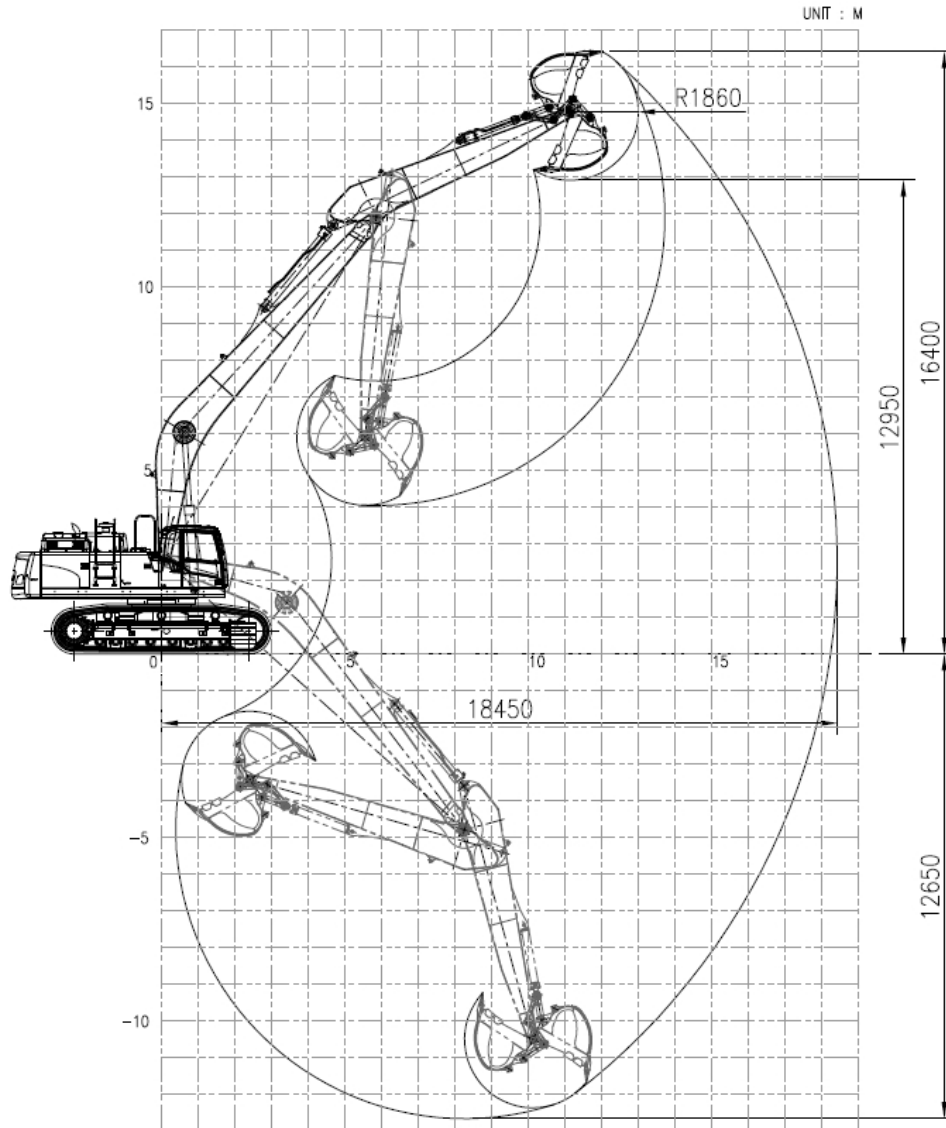
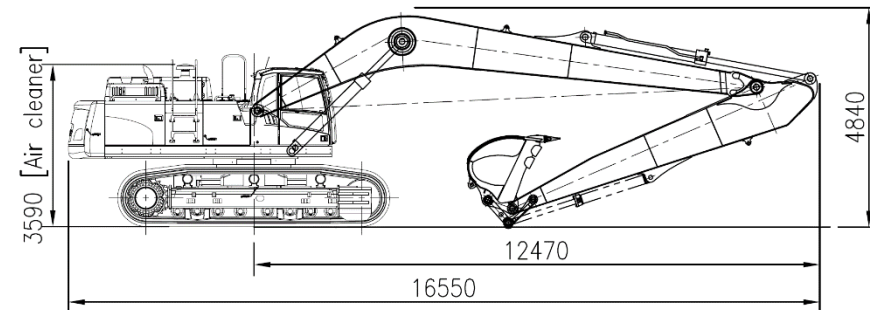


— EC750DL with VLR75-60 (18.4m)

Working range



Dimension



Weight (without bucket)

Base machine (shoe 600mm)		kg	44,855
CWT	Factory CW	kg	12,700
	Additional	kg	3,000
Front (working equipment)		kg	12,300
Total		kg	72,855

Component

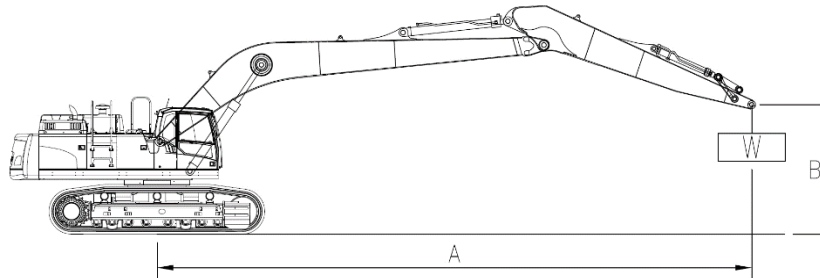
LR kit	Boom length	m	11.0
	Arm length	m	6.0
Cylinder	Boom		EC750D
	Arm		EC750D
	Bucket		EC480D
Linkage (C/rod & Yoke)			EC480D
Breakout force-bucket (power boost)		kN	240.3 (SAEJ1179)
Tearout force-arm (power boost)		kN	214.3 (SAEJ1179)
Recommended Bucket	GP Bucket	m ³ /kg	2.15 / 2,070 (Density : 1,800kg/m ³)

EC750DL with VLR75-60 (18.4m)

Lifting capacity

At arm end without bucket.

- Implement pressure : 350 kgf/cm²
- Power Boost pressure : 365 kgf/cm²



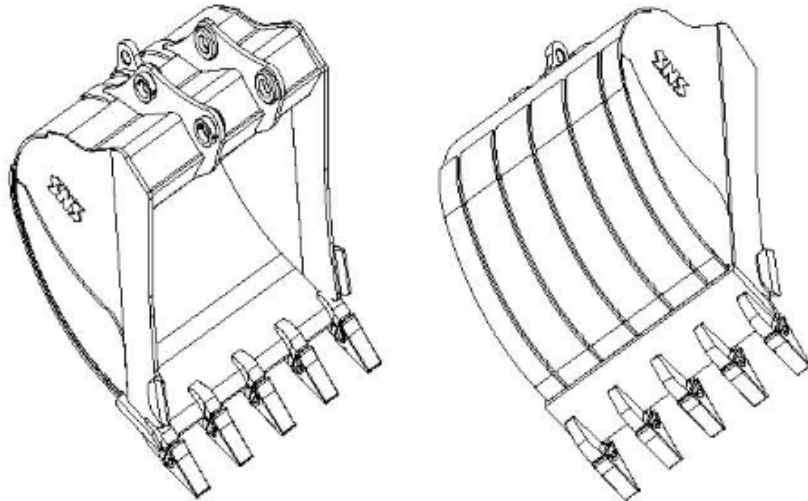
A \ B	3.0m		4.5m		6.0m		7.5m		9.0m		10.5m		12.0m		13.5m		15.0m		16.5m		Max. REACH				
	Along UC	Across UC	Along UC	Across UC	Along UC	Across UC	Along UC	Across UC	Along UC	Across UC	Along UC	Across UC	Along UC	Across UC	Along UC	Across UC	Along UC	Across UC	Along UC	Across UC	Along UC	Across UC	M		
13.5m														*7550	*7550							*6480	*6480	@12.42	
12.0m														*7350	*7350	*6580	*6580						*6150	*6150	@13.60
10.5m														*7410	*7410	*7110	*7110						*5950	*5950	@14.53
9.0m														*7620	*7620	*7190	*7190	*6930	*6930				*5840	*5840	@15.26
7.5m											*8700	*8700	*7950	*7950	*7380	*7380	*6980	*6980				*5820	*5820	@15.81	
6.0m							*12650	*12650	*10660	*10660	*9310	*9310	*8350	*8350	*7640	*7640	*7120	7030				*5860	*5860	@16.21	
4.5m							*14190	*14190	*11630	*11630	*9960	*9960	*8790	*8790	*7940	*7940	*7290	6850				*5970	5750	@16.46	
3.0m							*15560	*15560	*12550	*12550	*10590	*10590	*9230	*9230	*8230	7920	*7470	6660	*6580	5610		*6140	5570	@16.56	
1.5m							*16530	*16530	*13280	*13280	*11120	11010	*9600	9110	*8480	7640	*7620	6470	*6660	5520		*6400	5500	@16.54	
0m						*9350	*9350	*17020	16600	*13750	13030	*11500	10590	*9880	8800	*8670	7420	*7700	6320			*6750	5510	@16.37	
-1.5m						*12010	*12010	*17070	16250	*13940	12670	*11680	10290	*10020	8560	*8730	7250	*7670	6220			*6940	5630	@16.06	
-3.0m			*9950	*9950	*15560	*15560	*16750	16120	*13830	12490	*11650	10110	*9980	8420	*8640	7150	*7470	6170				*6960	5860	@15.60	
-4.5m	*11090	*11090	*14090	*14090	*19520	*19520	*16080	*16080	*13420	12450	*11350	10050	*9710	8370	*8330	7130						*6950	6240	@14.98	
-6.0m	*15230	*15230	*18740	*18740	*18020	*18020	*15050	*15050	*12670	12540	*10750	10110	*9130	8430	*7640	7230						*6870	6830	@14.17	
-7.5m	*19880	*19880	*19050	*19050	*16040	*16040	*13560	*13560	*11490	*11490	*9720	*9720	*8080	*8080								*6680	*6680	@13.14	
-9.0m			*15520	*15520	*13390	*13390	*11470	*11470	*9710	*9710	*8010	*8010										*6240	*6240	@11.84	
-10.5m							*8420	*8420	*6860	*6860												*5300	*5300	@10.14	

unit : kg

- Notes :
1. Machine in "Implement Pressure" for lifting capacities.
 2. The above loads are in compliance with SAE J1097 and ISO 10567 Hydraulic Excavator lifting capacity Standards.
 3. Rated loads do not exceed 87% of hydraulic capacity or 75% of tipping load.
 4. Rated loads marked with an asterisk(*) are limited by hydraulic capacity rather than tipping load..

EC750DL with VLR75-60 (18.4m)

■ GP(General Purpose) Bucket



- Optimal profile being capable of maximum excavation efficiently.
- Eminent abrasive resistant capability ensured by adopting HARDOX400 in critical area.
- Ultimate bending and torsional stiffness imposed in upper beam
- Abrasive resistant material being used in mounting boss with ARM.
- Sided pin type teeth without losing of point.
- Corner digging effect aggrandized by aligning edge teeth with side cutting plate
- Abrasive resistant extra-plate in bottom and side region qualifying HD class performances.
- Welding typed single side cutter .

EC750DL with VLR75-60 (18.4m)

GP Bucket Breakdown

