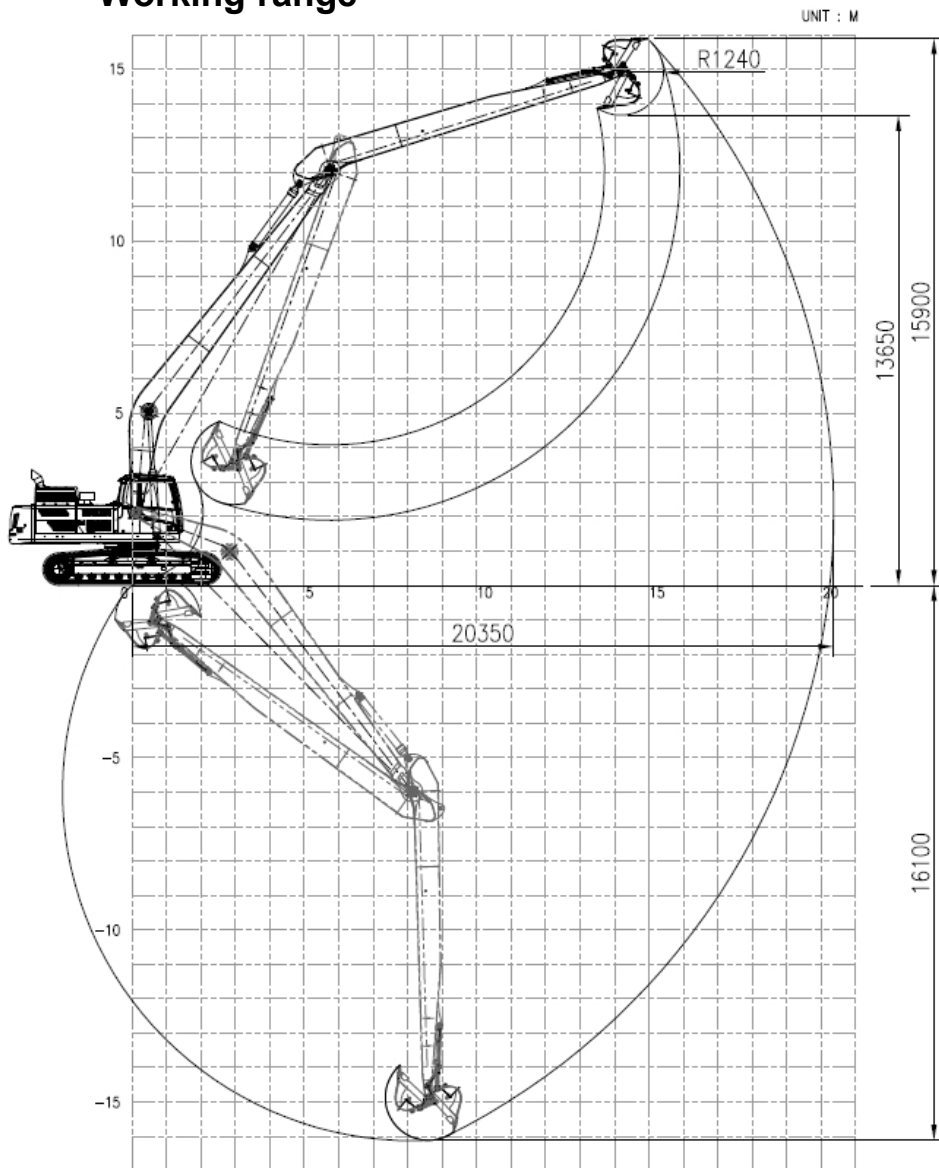
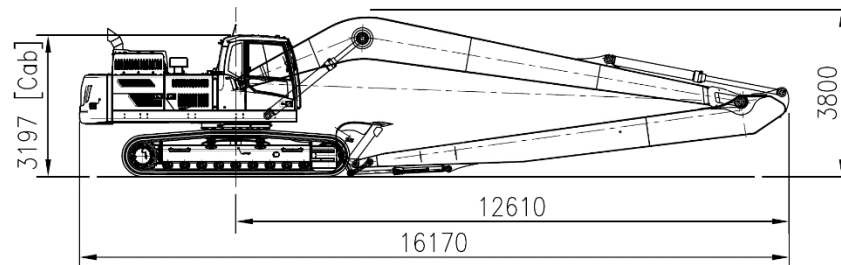


EC350DL with VLR35-68 (20.4m)

Working range



Dimension



Weight (without bucket)

Base machine (shoe 600mm)		kg	21,644
CWT	Factory CW	kg	7,250
	Additional	kg	2,500
Front (working equipment)		kg	7,020
Total		kg	38,414

Component

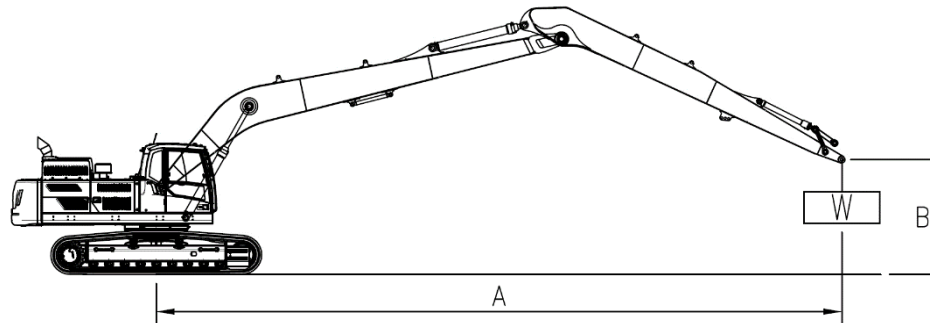
LR kit	Boom length	m	11.4
	Arm length	m	8.9
Cylinder	Boom		EC350D
	Arm		EC350D
	Bucket		EC140D
Linkage (C/rod & Yoke)			EC140D
Breakout force-bucket (power boost)		kN	93.5 (SAEJ1179)
Tearout force-arm (power boost)		kN	85.2 (SAEJ1179)
Recommended Bucket	GP Bucket	m ³ /kg	0.56 / 515 (Density:1.8 ton/m3)

EC350DL with VLR35-68 (20.4m)

Lifting capacity

At arm end without bucket.

- Implement pressure : 330 kgf/cm²
- Power Boost pressure : 360 kgf/cm²



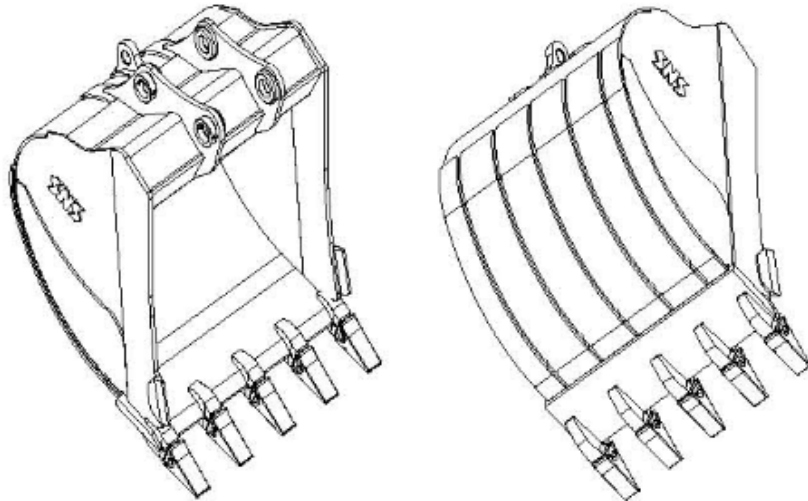
A \ B	4.5m		6.0m		7.5m		9.0m		10.5m		12.0m		13.5m		15.0m		16.5m		18.0m		Max. REACH						
	Along UC	Across UC	Along UC	Across UC	Along UC	Across UC	Along UC	Across UC	Along UC	Across UC	Along UC	Across UC	Along UC	Across UC	Along UC	Across UC	Along UC	Across UC	Along UC	Across UC	Along UC	Across UC	M				
13.5m																								*1650	*1650	@15.34	
12.0m																									*1600	*1600	@16.35
10.5m																									*1580	*1580	@17.17
9.0m																									*1570	*1570	@17.83
7.5m																									*1590	*1590	@18.34
6.0m																									*1610	*1610	@18.72
4.5m																									*1660	1550	@18.97
3.0m	*10130	*10130	*7170	*7170	*5640	*5640	*4710	*4710	*4090	*4090	*3650	*3650	*3330	3130	*3090	2560	*2900	2100	*2770	1710	*1720	1470	@19.10				
1.5m	*7220	*7220	*8590	*8590	*6540	*6540	*5320	*5320	*4530	4360	*3970	3540	*3570	2900	*3270	2400	*3040	1980	2810	1630	*1800	1410	@19.11				
0m	*5630	*5630	*9700	8150	*7320	6210	*5880	4910	*4940	3980	*4280	3260	*3810	2700	*3450	2240	*3180	1870	2730	1550	*1910	1370	@19.00				
-1.5m	*5690	*5690	*9600	7450	*7920	5660	*6350	4490	*5300	3660	*4560	3020	*4020	2520	3590	2110	3080	1770	2660	1490	*2040	1360	@18.77				
-3.0m	*6280	*6280	*9430	7060	*8350	5290	*6710	4190	*5590	3420	*4790	2830	4060	2370	3470	2000	3000	1690	2610	1440	*2220	1380	@18.41				
-4.5m	*7130	*7130	*9940	6880	*8590	5080	6910	3990	5590	3250	4650	2690	3940	2260	3390	1920	2940	1640			*2440	1420	@17.92				
-6.0m	*8150	*8150	*10860	6850	*8680	5000	6790	3890	5490	3150	4560	2610	3870	2200	3340	1870	2920	1620			*2740	1510	@17.29				
-7.5m	*9340	*9340	*10860	6920	*8610	5000	6770	3870	5450	3120	4530	2580	3860	2180	3340	1870					2950	1640	@16.50				
-9.0m	*10700	*10700	*10450	7090	*8370	5090	6820	3920	5490	3150	4560	2610	3890	2210	3390	1920					3250	1840	@15.52				
-10.5m	*12280	11560	*9810	7350	*7930	5260	*6590	4040	*5570	3250	4660	2700	3990	2310							*3700	2150	@14.31				
-12.0m	*11310	*11310	*8870	7700	*7230	5520	*6030	4240	*5080	3420	*4270	2870									*3850	2650	@12.82				
-13.5m	*9420	*9420	*7510	*7510	*6180	5880	*5130	4550	*4220	3700											*3970	3530	@10.92				

unit : kg

- Notes :
1. Machine in "Fine Mode-F"(Power Boost) for lifting capacities.
 2. The above loads are in compliance with SAE J1097 and ISO 10567 Hydraulic Excavator lifting capacity Standards.
 3. Rated loads do not exceed 87% of hydraulic capacity or 75% of tipping load.
 4. Rated loads marked with an asterisk(*) are limited by hydraulic capacity rather than tipping load..

EC350DL with VLR35-68 (20.4m)

■ GP(General Purpose) Bucket



- Optimal profile being capable of maximum excavation efficiently.
- Eminent abrasive resistant capability ensured by adopting HARDOX400 in critical area.
- Ultimate bending and torsional stiffness imposed in upper beam
- Abrasive resistant material being used in mounting boss with ARM.
- Sided pin type teeth without losing of point.
- Corner digging effect aggrandized by aligning edge teeth with side cutting plate
- Abrasive resistant extra-plate in bottom and side region qualifying HD class performances.
- Welding typed single side cutter .

EC350DL with VLR35-68 (20.4m)

GP Bucket Breakdown

