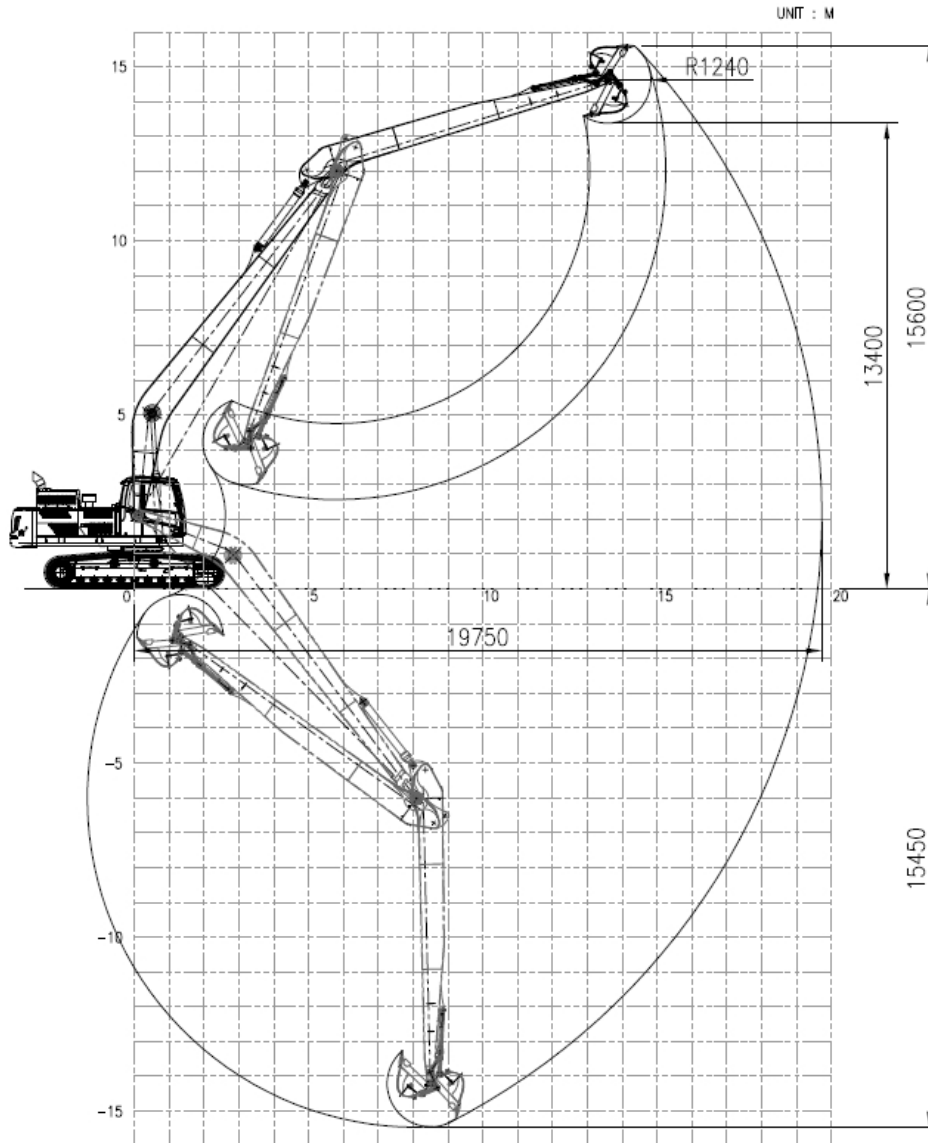
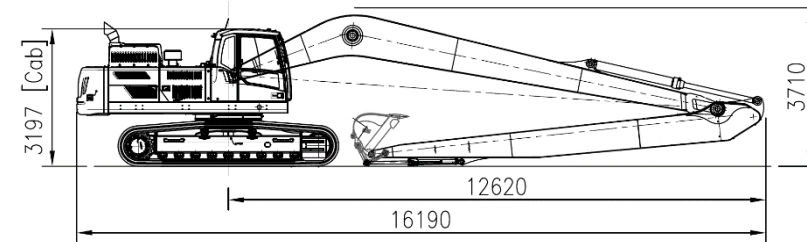


EC350DL with VLR35-65 (19.8m)

Working range



Dimension



Weight (without bucket)

Base machine (shoe 600mm)		kg	21,644
CWT	Factory CW	kg	7,250
	Additional	kg	2,500
Front (working equipment)		kg	6,890
Total		kg	38,284

Component

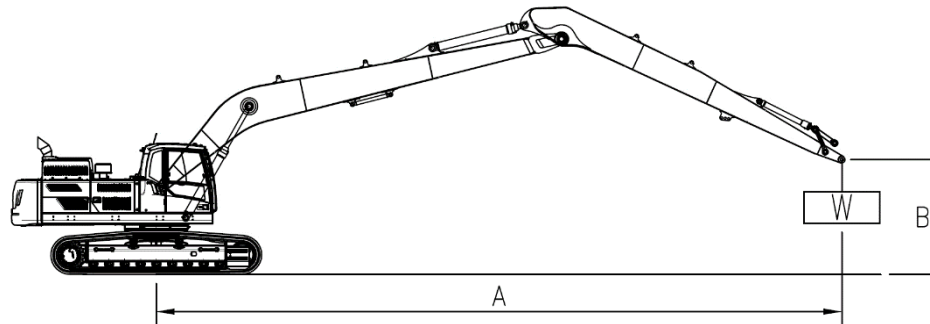
LR kit	Boom length	m	11.4
	Arm length	m	8.2
Cylinder	Boom		EC350D
	Arm		EC350D
	Bucket		EC140D
Linkage (C/rod & Yoke)			EC140D
Breakout force-bucket (power boost)		kN	93.5 (SAEJ1179)
Tearout force-arm (power boost)		kN	90.7 (SAEJ1179)
Recommended Bucket	GP Bucket	m ³ /kg	0.61 / 550 (Density:1.8 ton/m3)

EC350DL with VLR35-65 (19.8m)

Lifting capacity

At arm end without bucket.

- Implement pressure : 330 kgf/cm²
- Power Boost pressure : 360 kgf/cm²



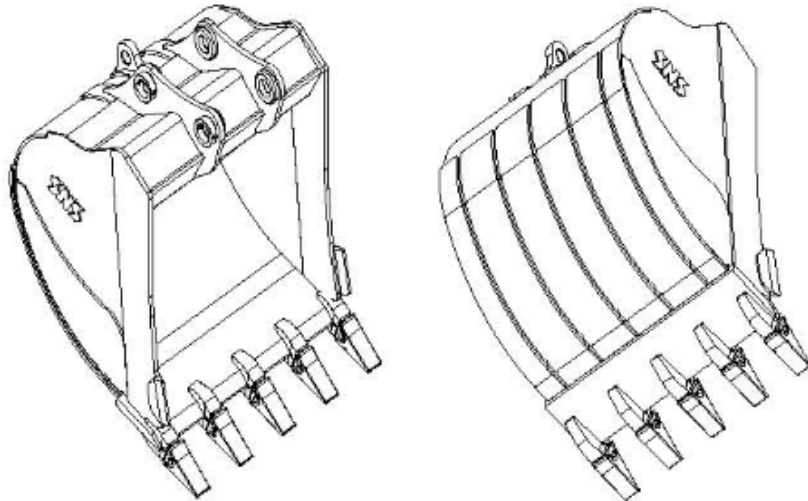
B	A	4.5m		6.0m		7.5m		9.0m		10.5m		12.0m		13.5m		15.0m		16.5m		18.0m		Max. REACH			
		Along UC	Across UC	Along UC	Across UC	Along UC	Across UC	Along UC	Across UC	Along UC	Across UC	Along UC	Across UC	Along UC	Across UC	Along UC	Across UC	Along UC	Across UC	Along UC	Across UC	Along UC	Across UC	M	
13.5m																							*1900	*1900	@14.54
12.0m															*2510	*2510							*1840	*1840	@15.61
10.5m														*2660	*2660								*1810	*1810	@16.47
9.0m													*2770	*2770	*2720	*2720	*2620	2410					*1810	*1810	@17.15
7.5m													*2920	*2920	*2820	*2820	*2760	2360					*1820	*1820	@17.68
6.0m												*3300	*3300	*3100	*3100	*2950	2820	*2850	2280	*1970	1830		*1860	1810	@18.07
4.5m							*4490	*4490	*3970	*3970	*3590	*3590	*3320	3280	*3110	2670	*2960	2180	*2450	1770			*1910	1680	@18.33
3.0m	*9540	*9540	*8000	*8000	*6180	*6180	*5100	*5100	*4400	*4400	*3910	3760	*3550	3070	*3280	2520	*3080	2080	*2780	1700			*1980	1590	@18.46
1.5m	*5250	*5250	*9350	8800	*7050	6700	*5700	5280	*4830	4250	*4220	3480	*3790	2870	*3460	2380	*3220	1970	2810	1630			*2080	1530	@18.47
0m	*4850	*4850	*9580	7880	*7780	6040	*6230	4810	*5220	3910	*4520	3220	*4010	2680	*3630	2240	3190	1870	2740	1570			*2210	1500	@18.36
-1.5m	*5380	*5380	*8870	7360	*8310	5580	*6660	4450	*5560	3630	*4780	3010	4210	2520	3600	2120	3100	1790	*2650	1520			*2370	1500	@18.12
-3.0m	*6250	*6250	*9190	7110	*8650	5310	*6970	4200	5780	3430	4810	2850	4080	2400	3500	2030	3030	1730					*2580	1520	@17.75
-4.5m	*7310	*7310	*10030	7030	*8820	5170	6960	4050	5640	3300	4700	2740	3990	2310	3440	1970	3000	1690					2820	1580	@17.25
-6.0m	*8530	*8530	*11150	7060	*8820	5130	6890	3990	5570	3230	4640	2680	3940	2270	3410	1940	3000	1700					2980	1690	@16.59
-7.5m	*9900	*9900	*10830	7180	*8660	5180	6910	4000	5560	3230	4630	2680	3950	2270	3440	1970							3230	1850	@15.76
-9.0m	*11470	*11470	*10300	7390	*8320	5310	*6910	4080	5630	3290	4690	2730	4010	2330									3600	2100	@14.73
-10.5m	*12150	12090	*9520	7680	*7770	5510	*6490	4240	*5490	3420	*4670	2850											*3940	2480	@13.45
-12.0m	*10550	*10550	*8400	8080	*6920	5800	*5790	4480	*4850	3630													*4080	3120	@11.85
-13.5m			*6790	*6790	*5620	*5620	*4630	*4630															*4150	*4150	@9.76

unit : kg

- Notes :
1. Machine in "Fine Mode-F"(Power Boost) for lifting capacities.
 2. The above loads are in compliance with SAE J1097 and ISO 10567 Hydraulic Excavator lifting capacity Standards.
 3. Rated loads do not exceed 87% of hydraulic capacity or 75% of tipping load.
 4. Rated loads marked with an asterisk(*) are limited by hydraulic capacity rather than tipping load..

EC350DL with VLR35-65 (19.8m)

■ GP(General Purpose) Bucket



- Optimal profile being capable of maximum excavation efficiently.
- Eminent abrasive resistant capability ensured by adopting HARDOX400 in critical area.
- Ultimate bending and torsional stiffness imposed in upper beam
- Abrasive resistant material being used in mounting boss with ARM.
- Sided pin type teeth without losing of point.
- Corner digging effect aggrandized by aligning edge teeth with side cutting plate
- Abrasive resistant extra-plate in bottom and side region qualifying HD class performances.
- Welding typed single side cutter .

EC350DL with VLR35-65 (19.8m)

GP Bucket Breakdown

