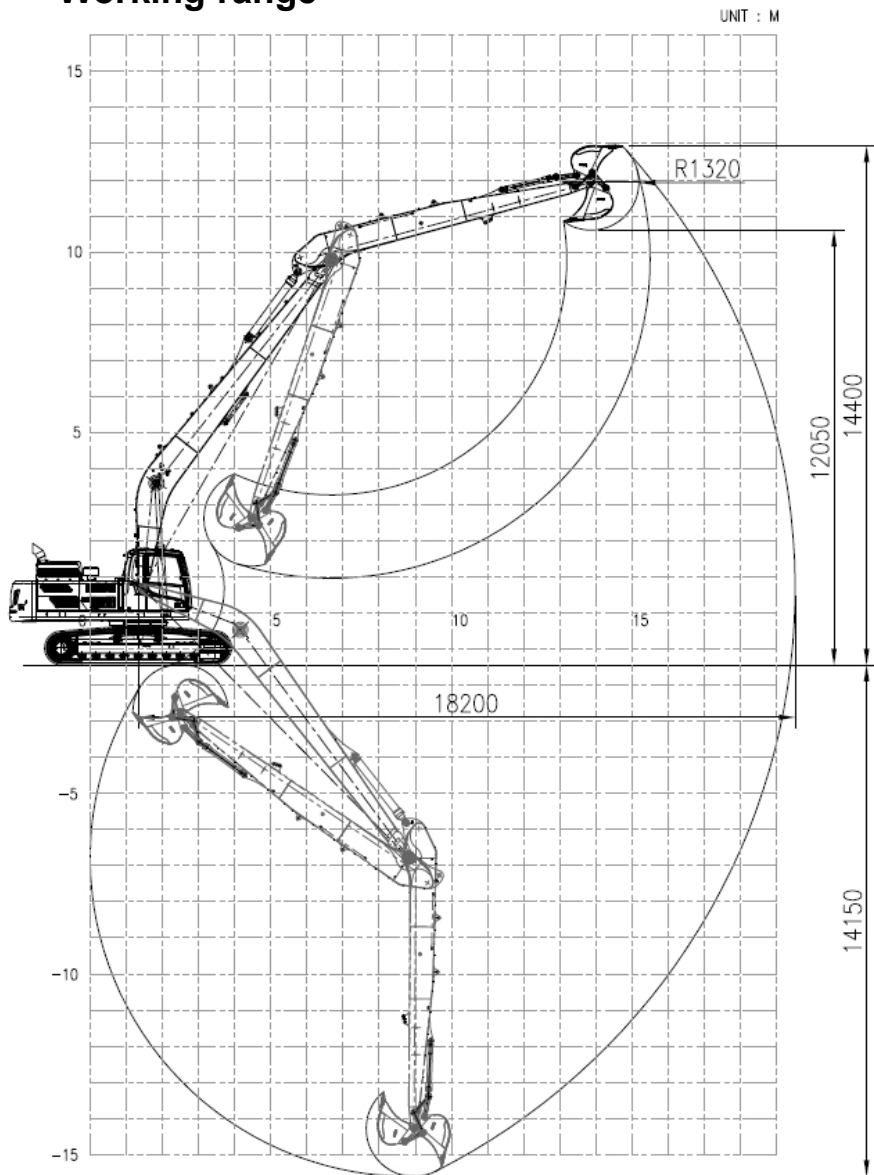
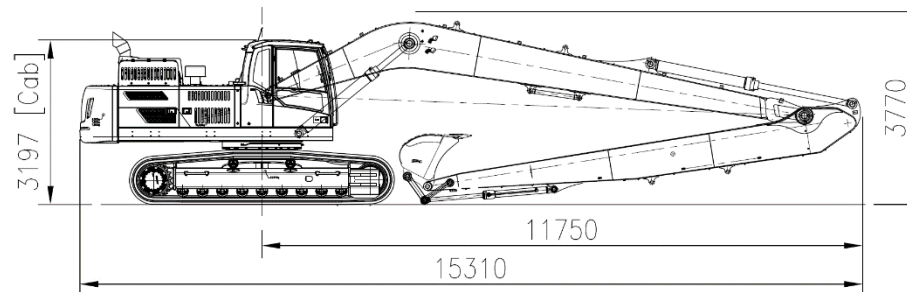


EC350DL with VLR35-60 (18.2m)

Working range



Dimension



Weight (without bucket)

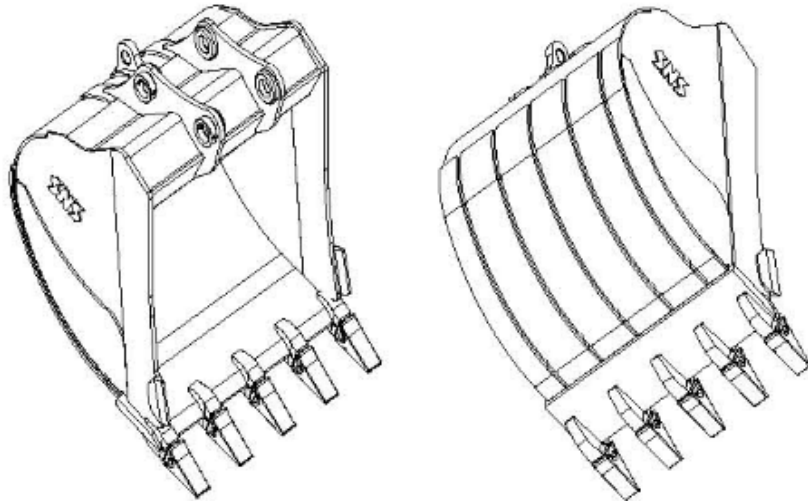
Base machine (shoe 600mm)		kg	21,644
CWT	Factory CW	kg	7,250
	Additional	kg	2,500
Front (working equipment)		kg	6,480
Total		kg	37,874

Component

LR kit	Boom length	m	10.5
	Arm length	m	7.5
Cylinder	Boom		EC350D
	Arm		EC350D
	Bucket		EC160E
Linkage (C/rod & Yoke)			EC160E
Breakout force-bucket (power boost)		kN	104.2 (SAEJ1179)
Tearout force-arm (power boost)		kN	91.4 (SAEJ1179)
Recommended Bucket	GP Bucket	m ³ /kg	0.81 / 730 (Density:1.8 ton/m3)

EC350DL with VLR35-60 (18.2m)

■ GP(General Purpose) Bucket



- Optimal profile being capable of maximum excavation efficiently.
- Eminent abrasive resistant capability ensured by adopting HARDOX400 in critical area.
- Ultimate bending and torsional stiffness imposed in upper beam
- Abrasive resistant material being used in mounting boss with ARM.
- Sided pin type teeth without losing of point.
- Corner digging effect aggrandized by aligning edge teeth with side cutting plate
- Abrasive resistant extra-plate in bottom and side region qualifying HD class performances.
- Welding typed single side cutter .

EC350DL with VLR35-60 (18.2m)

GP Bucket Breakdown

