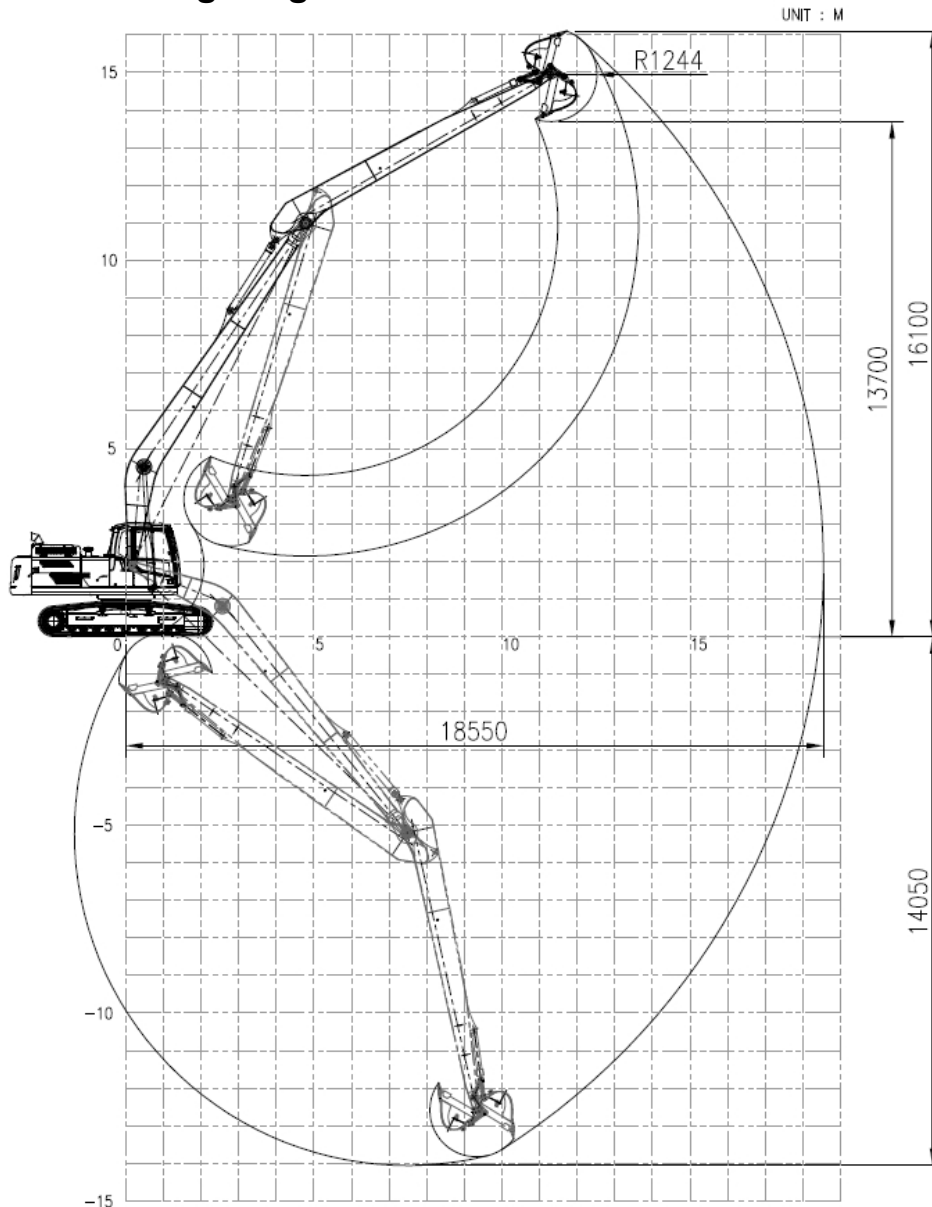
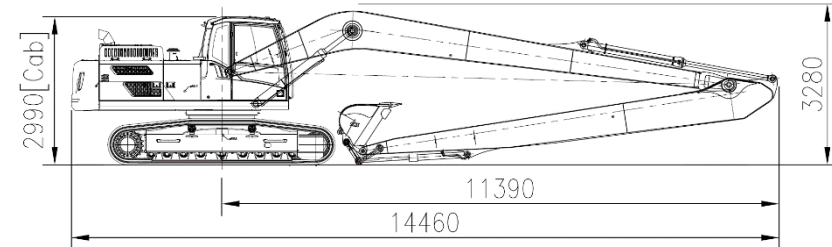


# EC250DL with VLR25-60 (18.6m)

## Working range



## Dimension



## Weight (without bucket)

Base machine (shoe 600mm)		kg	16,492
CWT	Factory CW	kg	4,950
	Additional	kg	2,500
Front (working equipment)		kg	4,980
Total		kg	28,922

## Component

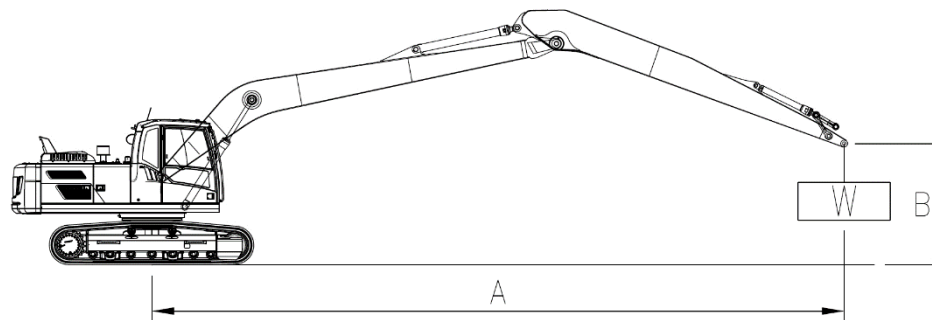
LR kit	Boom length	m	10.2
	Arm length	m	7.6
Cylinder	Boom		EC250D
	Arm		EC250D
	Bucket		EC140D
Linkage (C/rod & Yoke)			EC140D
Breakout force-bucket (power boost)		kN	98.1 (SAEJ1179)
Tearout force-arm (power boost)		kN	58.8 (SAEJ1179)
Recommended bucket	GP Bucket	m <sup>3</sup> /kg	0.51 / 480 (Density:1,800kg/m <sup>3</sup> )

# EC250DL with VLR25-60 (18.6m)

## Lifting capacity

At arm end without bucket.

- Implement pressure : 340 kgf/cm<sup>2</sup>
- Power Boost pressure : 370 kgf/cm<sup>2</sup>



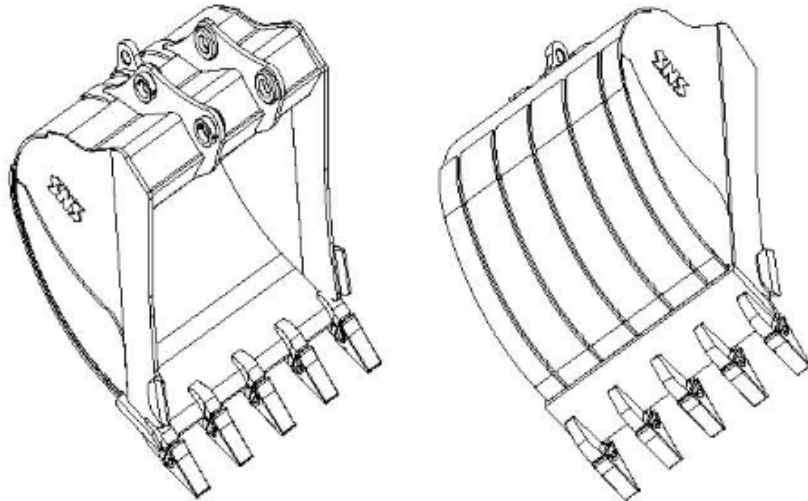
B \ A	3.0m		4.5m		6.0m		7.5m		9.0m		10.5m		12.0m		13.5m		15.0m		16.5m		Max. REACH					
	Along UC	Across UC	Along UC	Across UC	Along UC	Across UC	Along UC	Across UC	Along UC	Across UC	Along UC	Across UC	Along UC	Across UC	Along UC	Across UC	Along UC	Across UC	Along UC	Across UC	Along UC	Across UC	M			
13.5m														*1520	*1520							*1370	*1370	@12.19		
12.0m																							*1300	*1300	@13.47	
10.5m															*1930	*1930							*1250	*1250	@14.48	
9.0m															*2300	*2300	*1490	*1490					*1230	*1230	@15.28	
7.5m														*2870	*2870	*2590	2400	*1970	1900					*1230	*1230	@15.89
6.0m														*3190	2910	*2890	2320	*2310	1850					*1240	*1240	@16.35
4.5m									*4120	*4120	*3710	3470	*3400	2760	*3160	2210	*2620	1790	*1460	1430			*1270	*1270	@16.65	
3.0m				*9350	*9350	*6800	*6800	*5440	5410	*4600	4120	*4030	3240	*3630	2590	3220	2100	2690	1710	*1710	1390		*1320	*1320	@16.82	
1.5m				*6120	*6120	*7910	6580	*6140	4880	*5070	3780	*4360	3010	3740	2430	3110	1990	2610	1630	*1850	1340		*1390	1280	@16.85	
0m				*4530	*4530	*8740	5920	*6720	4450	5430	3490	4360	2800	3580	2280	2990	1880	2530	1560	*1840	1290		*1470	1260	@16.75	
-1.5m	*2760	*2760	*4580	*4580	*8500	5510	6660	4130	5180	3250	4180	2630	3450	2160	2900	1790	2470	1500	*1600	1260			*1590	1260	@16.51	
-3.0m	*3600	*3600	*5160	*5160	*8340	5290	6440	3930	5000	3090	4040	2500	3350	2060	2830	1720	2420	1450					*1750	1290	@16.12	
-4.5m	*4520	*4520	*6010	*6010	8810	5200	6320	3820	4890	2990	3950	2420	3280	2000	2780	1680	2400	1430					*1950	1360	@15.59	
-6.0m	*5520	*5520	*7060	*7060	8820	5210	6290	3800	4850	2950	3920	2380	3260	1970	2770	1670							*2250	1460	@14.88	
-7.5m	*6640	*6640	*8340	8250	*8540	5300	6340	3830	4870	2970	3930	2390	3280	1990	2810	1700							*2680	1630	@13.98	
-9.0m	*7920	*7920	*9780	8510	*7760	5450	*6350	3930	4950	3040	4000	2460	3350	2060									3080	1900	@12.83	
-10.5m			*8190	*8190	*6630	5680	*5490	4100	*4560	3180	*3740	2590											*3250	2350	@11.38	

unit : kg

- Notes :
1. Machine in "Fine Mode-F"(Power Boost) for lifting capacities.
  2. The above loads are in compliance with SAE J1097 and ISO 10567 Hydraulic Excavator lifting capacity Standards.
  3. Rated loads do not exceed 87% of hydraulic capacity or 75% of tipping load.
  4. Rated loads marked with an asterisk(\*) are limited by hydraulic capacity rather than tipping load..

## EC250DL with VLR25-60 (18.6m)

### ■ GP(General Purpose) Bucket



- Optimal profile being capable of maximum excavation efficiently.
- Eminent abrasive resistant capability ensured by adopting HARDOX400 in critical area.
- Ultimate bending and torsional stiffness imposed in upper beam
- Abrasive resistant material being used in mounting boss with ARM.
- Sided pin type teeth without losing of point.
- Corner digging effect aggrandized by aligning edge teeth with side cutting plate
- Abrasive resistant extra-plate in bottom and side region qualifying HD class performances.
- Welding typed single side cutter .

# EC250DL with VLR25-60 (18.6m)

## GP Bucket Breakdown

