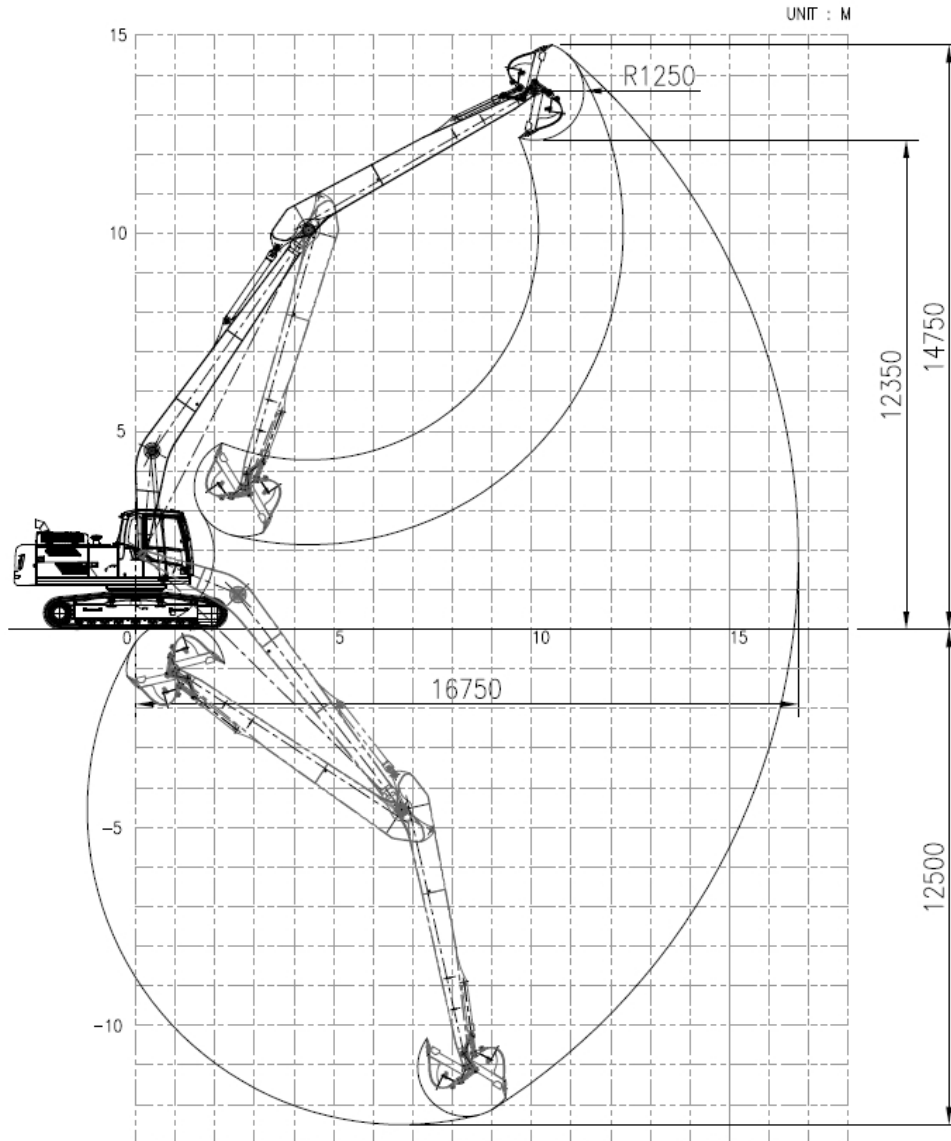
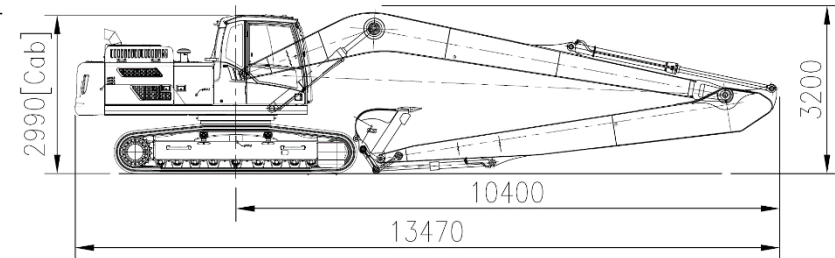


EC250DL with VLR25-55 (16.8m)

Working range



Dimension



Weight (without bucket)

Base machine (shoe 600mm)		kg	16,492
CWT	Factory CW	kg	4,950
	Additional	kg	2,000
Front (working equipment)		kg	4,260
Total		kg	28,202

Component

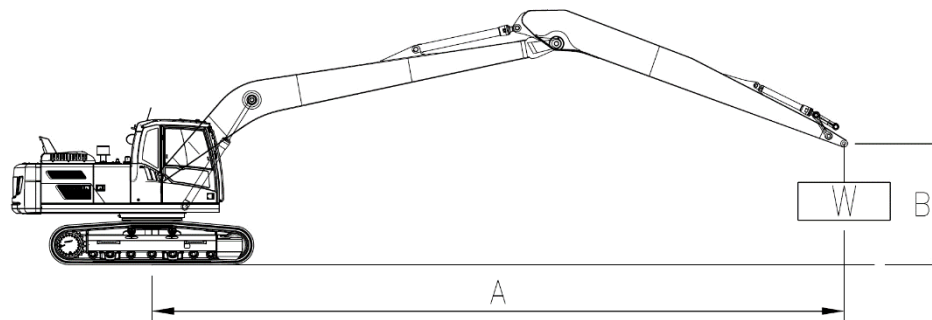
LR kit	Boom length	m	9.2
	Arm length	m	6.7
Cylinder	Boom		EC250D
	Arm		EC250D
	Bucket		EC140D
Linkage (C/rod & Yoke)			EC140D
Breakout force-bucket (power boost)		kN	98.1 (SAEJ1179)
Tearout force-arm (power boost)		kN	64.9 (SAEJ1179)
Recommended bucket	GP Bucket	m ³ /kg	0.56 / 515 (Density:1,800kg/m ³)

EC250DL with VLR25-55 (16.8m)

Lifting capacity

At arm end without bucket.

- Implement pressure : 340 kgf/cm²
- Power Boost pressure : 370 kgf/cm²



A \ B	3.0m		4.5m		6.0m		7.5m		9.0m		10.5m		12.0m		13.5m		15.0m		Max. REACH				
	Along UC	Across UC	Along UC	Across UC	Along UC	Across UC	Along UC	Across UC	Along UC	Across UC	Along UC	Across UC	Along UC	Across UC	Along UC	Across UC	Along UC	Across UC	Along UC	Across UC	M		
12.0m																				*1630	*1630	@11.25	
10.5m													*2000	*2000							*1540	*1540	@12.45
9.0m													*2610	*2610							*1500	*1500	@13.38
7.5m													*2920	*2920	*2150	*2150					*1490	*1490	@14.08
6.0m											*3170	*3170	*3070	2960	*2650	2380					*1500	*1500	@14.59
4.5m										*3750	*3750	*3470	*3470	*3270	2850	*3060	2310				*1530	*1530	@14.94
3.0m			*8310	*8310	*6090	*6090	*4950	*4950	*4260	*4260	*3820	3380	*3510	2730	*3300	2230	*1800	*1800			*1590	*1590	@15.13
1.5m			*8340	*8340	*7360	6950	*5730	5150	*4780	4000	*4170	3200	*3760	2600	3260	2150	*1960	1780			*1670	*1670	@15.16
0m	*2720	*2720	*6060	*6060	*8350	6390	*6410	4790	*5260	3760	*4510	3030	3780	2490	3180	2070	*1870	1740			*1780	1730	@15.05
-1.5m	*3670	*3670	*6130	*6130	*8990	6050	*6920	4530	5490	3570	4440	2890	3680	2390	3110	2010					*1930	1750	@14.78
-3.0m	*4770	*4770	*6920	*6920	*9310	5880	6890	4370	5350	3440	4340	2800	3610	2330	3070	1970					*2140	1810	@14.34
-4.5m	*5980	*5980	*8100	*8100	*9340	5820	6810	4300	5280	3370	4280	2750	3580	2300	3060	1960					*2440	1920	@13.73
-6.0m	*7350	*7350	*9630	8990	*9120	5860	6810	4300	5270	3360	4280	2740	3590	2310							*2880	2110	@12.92
-7.5m	*8910	*8910	*11230	9210	*8630	5980	6890	4370	5330	3420	4330	2790									*3620	2410	@11.86
-9.0m	*10800	*10800	*9970	9510	*7780	6170	*6280	4510	*5140	3540											*4160	2930	@10.47
-10.5m			*8090	*8090	*6400	*6400	*5120	4750													*4260	3980	@8.61

unit : kg

Notes :1. Machine in "Fine Mode-F"(Power Boost) for lifting capacities.

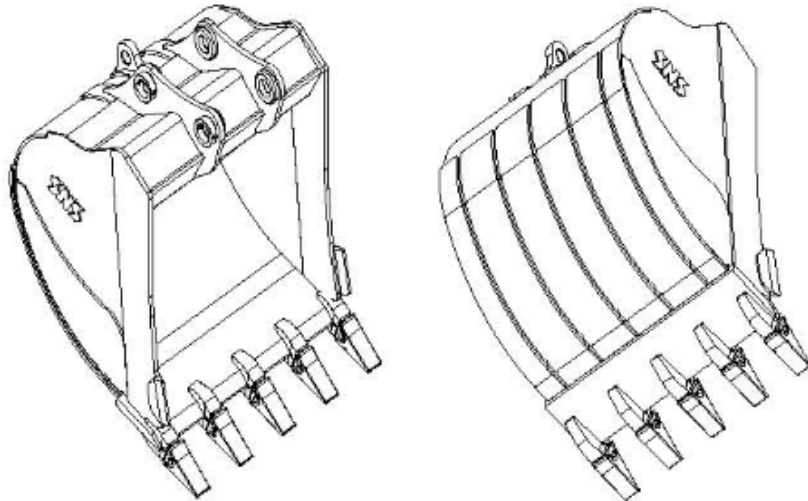
2. The above loads are in compliance with SAE J1097 and ISO 10567 Hydraulic Excavator lifting capacity Standards.

3. Rated loads do not exceed 87% of hydraulic capacity or 75% of tipping load.

4. Rated loads marked with an asterisk(*) are limited by hydraulic capacity rather than tipping load..

EC250DL with VLR25-55 (16.8m)

■ GP(General Purpose) Bucket



- Optimal profile being capable of maximum excavation efficiently.
- Eminent abrasive resistant capability ensured by adopting HARDOX400 in critical area.
- Ultimate bending and torsional stiffness imposed in upper beam
- Abrasive resistant material being used in mounting boss with ARM.
- Sided pin type teeth without losing of point.
- Corner digging effect aggrandized by aligning edge teeth with side cutting plate
- Abrasive resistant extra-plate in bottom and side region qualifying HD class performances.
- Welding typed single side cutter .

EC250DL with VLR25-55 (16.8m)

GP Bucket Breakdown

